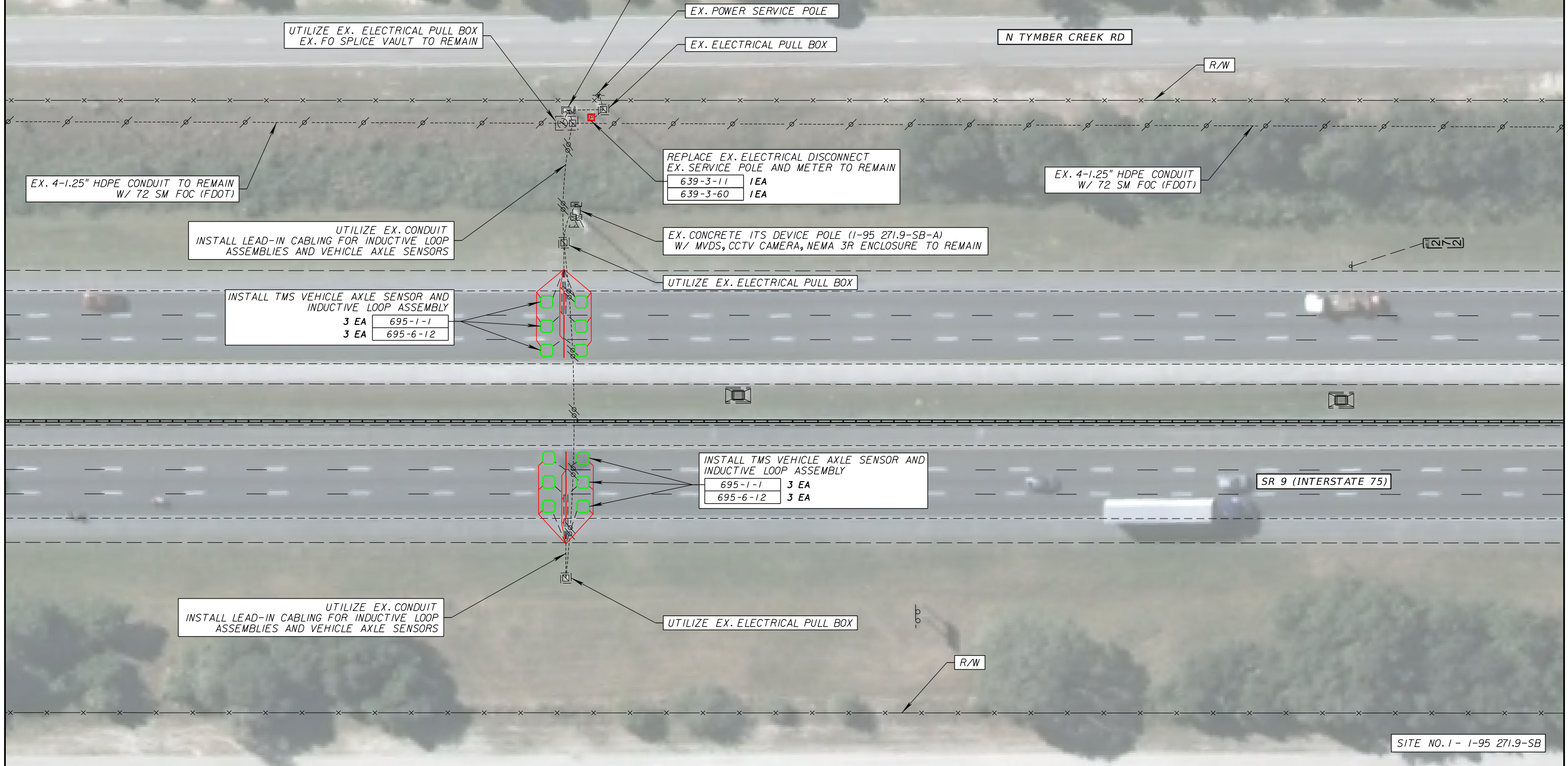
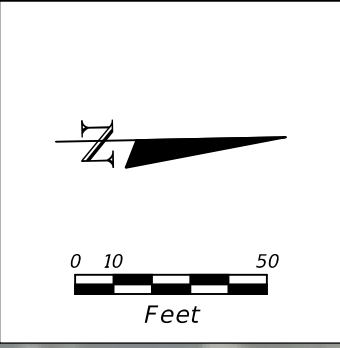


PAY ITEMS NOTES:

- 676-2-400 PAY ITEM SHALL INCLUDE ALL WORK NECESSARY TO RELOCATE EXISTING UPS BATTERY SHELF TO BOTTOM OF THE CABINET. PAY ITEM SHALL ALSO INCLUDE ALL WORK RELATED TO WIRING AND CABLING CONNECTIONS WITHIN THE CABINET.
- 684-2-1 DEVICE SERVER SHALL INCLUDE A MINIMUM OF (2) TWO TCP/IP NETWORK INTERFACES VIA RJ-45 PORTS AND (2) TWO EIA-232/422/485 STANDARD CONNECTIONS FOR FIELD DEVICES.
- 685-1-12 PAY ITEM SHALL ONLY INCLUDE THE WORK NECESSARY TO FURNISH AND INSTALL REPLACEMENT BATTERIES FOR THE EXISTING UPS SYSTEM, AS WELL AS THE REMOVAL AND DISPOSAL OF EXISTING BATTERIES.
- 695-3-11 TRAFFIC COUNTER/CLASSIFIER UNIT SHALL BE A RACK-MOUNTED UNIT AND INCLUDE, AT A MINIMUM, INDIVIDUAL PLUG-IN MODULES FOR INDUCTIVE LOOP AND PIEZO SENSORS, AS WELL AS 115 VAC POWER SUPPLY, AND RS-232 COMMUNICATION INTERFACE.

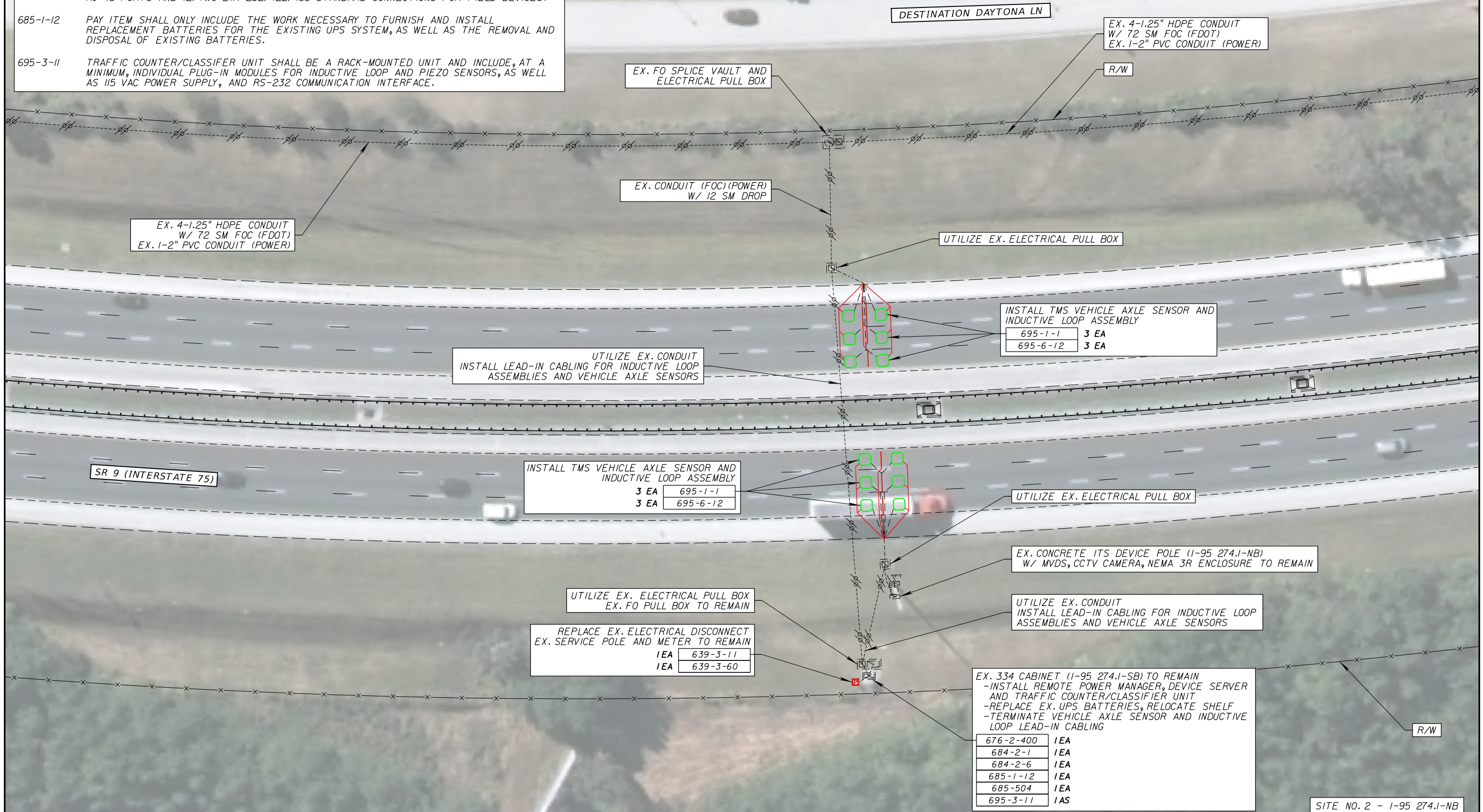
- EX. 334 CABINET (1-95 271.9-SB) TO REMAIN
 - INSTALL REMOTE POWER MANAGER, DEVICE SERVER AND TRAFFIC COUNTER/CLASSIFIER UNIT
 - REPLACE EX. UPS BATTERIES, RELOCATE SHELF
 - TERMINATE VEHICLE AXLE SENSOR AND INDUCTIVE LOOP LEAD-IN CABLING
- | | |
|-----------|-----|
| 676-2-400 | IEA |
| 684-2-1 | IEA |
| 684-2-6 | IEA |
| 685-1-12 | IEA |
| 685-504 | IEA |
| 695-3-11 | IAS |



REVISIONS				STATE OF FLORIDA DEPARTMENT OF TRANSPORTATION			TRAFFIC MONITORING SITE	SHEET NO.
DATE	DESCRIPTION	DATE	DESCRIPTION	ROAD NO.	COUNTY	FINANCIAL PROJECT ID		
				SR 9	VOLUSIA			

PAY ITEMS NOTES:

- 676-2-400 PAY ITEM SHALL INCLUDE ALL WORK NECESSARY TO RELOCATE EXISTING UPS BATTERY SHELF TO BOTTOM OF THE CABINET. PAY ITEM SHALL ALSO INCLUDE ALL WORK RELATED TO WIRING AND CABLING CONNECTIONS WITHIN THE CABINET.
- 684-2-1 DEVICE SERVER SHALL INCLUDE A MINIMUM OF (2) TWO TCP/IP NETWORK INTERFACES VIA RJ-45 PORTS AND (2) TWO EIA-232/422/485 STANDARD CONNECTIONS FOR FIELD DEVICES.
- 685-1-12 PAY ITEM SHALL ONLY INCLUDE THE WORK NECESSARY TO FURNISH AND INSTALL REPLACEMENT BATTERIES FOR THE EXISTING UPS SYSTEM, AS WELL AS THE REMOVAL AND DISPOSAL OF EXISTING BATTERIES.
- 695-3-11 TRAFFIC COUNTER/CLASSIFIER UNIT SHALL BE A RACK-MOUNTED UNIT AND INCLUDE, AT A MINIMUM, INDIVIDUAL PLUG-IN MODULES FOR INDUCTIVE LOOP AND PIEZO SENSORS, AS WELL AS IIS VAC POWER SUPPLY, AND RS-232 COMMUNICATION INTERFACE.



EX. 334 CABINET (I-95 274.1-SB) TO REMAIN
 -INSTALL REMOTE POWER MANAGER, DEVICE SERVER AND TRAFFIC COUNTER/CLASSIFIER UNIT
 -REPLACE EX. UPS BATTERIES, RELOCATE SHELF
 -TERMINATE VEHICLE AXLE SENSOR AND INDUCTIVE LOOP LEAD-IN CABLING

676-2-400	1EA
684-2-1	1EA
684-2-6	1EA
685-1-12	1EA
685-504	1EA
695-3-11	1AS

INSTALL TMS VEHICLE AXLE SENSOR AND INDUCTIVE LOOP ASSEMBLY

3 EA	695-1-1
3 EA	695-6-12

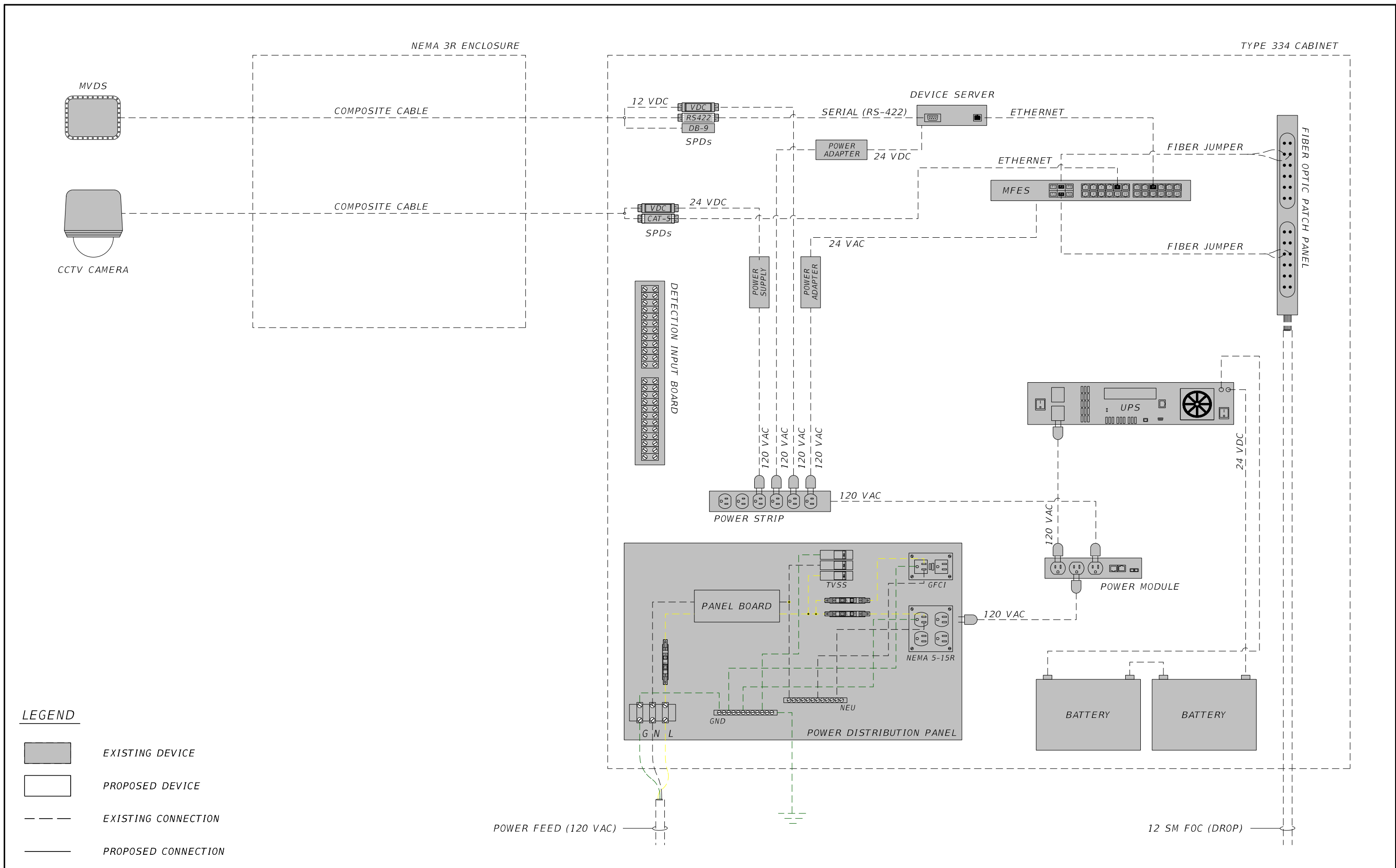
REPLACE EX. ELECTRICAL DISCONNECT EX. SERVICE POLE AND METER TO REMAIN

1EA	639-3-11
1EA	639-3-60

INSTALL TMS VEHICLE AXLE SENSOR AND INDUCTIVE LOOP ASSEMBLY

695-1-1	3 EA
695-6-12	3 EA

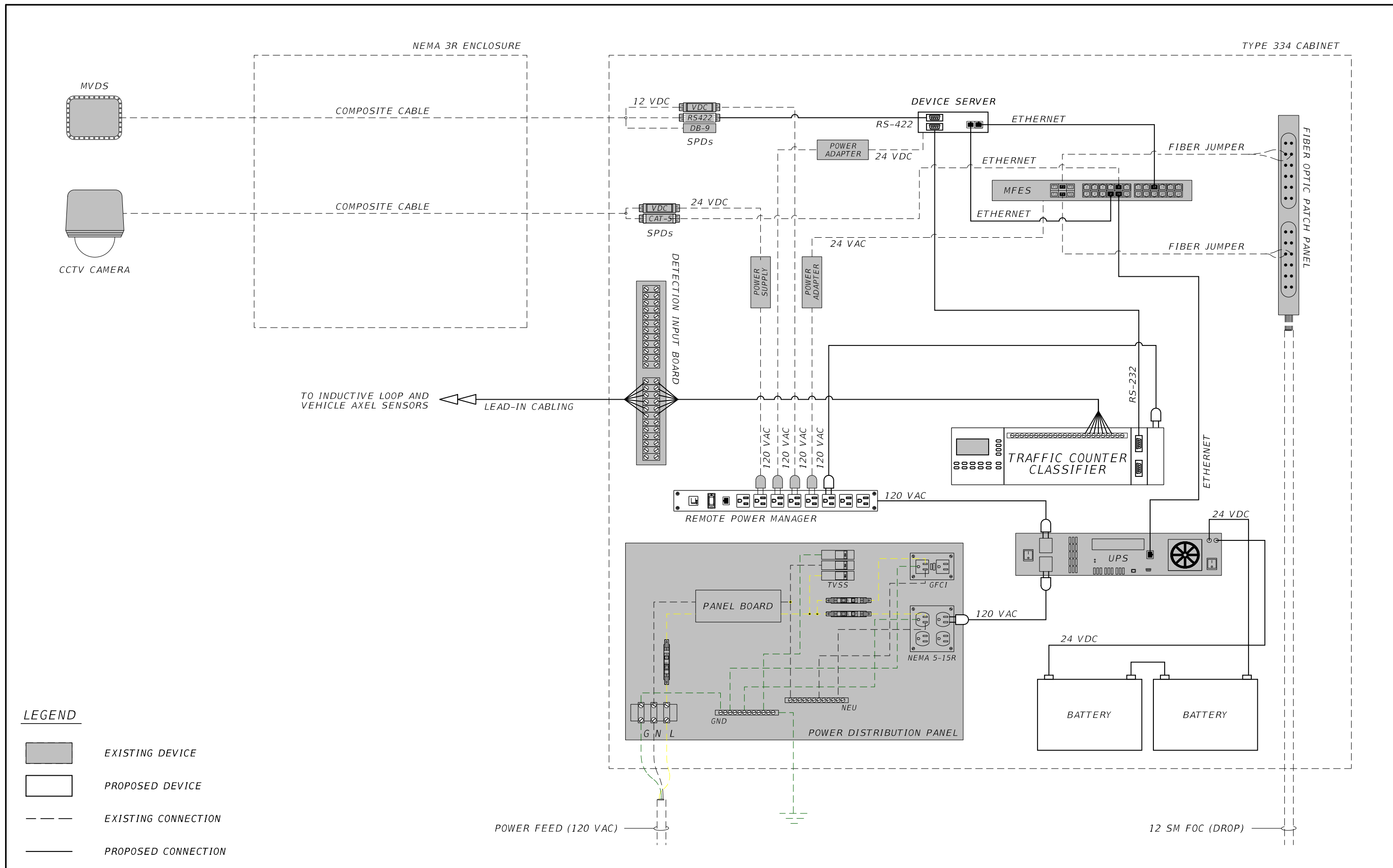
REVISIONS				STATE OF FLORIDA DEPARTMENT OF TRANSPORTATION			TRAFFIC MONITORING SITE	SHEET NO.
DATE	DESCRIPTION	DATE	DESCRIPTION	ROAD NO.	COUNTY	FINANCIAL PROJECT ID		
				SR 9	VOLUSIA			



REVISIONS			
DATE	DESCRIPTION	DATE	DESCRIPTION

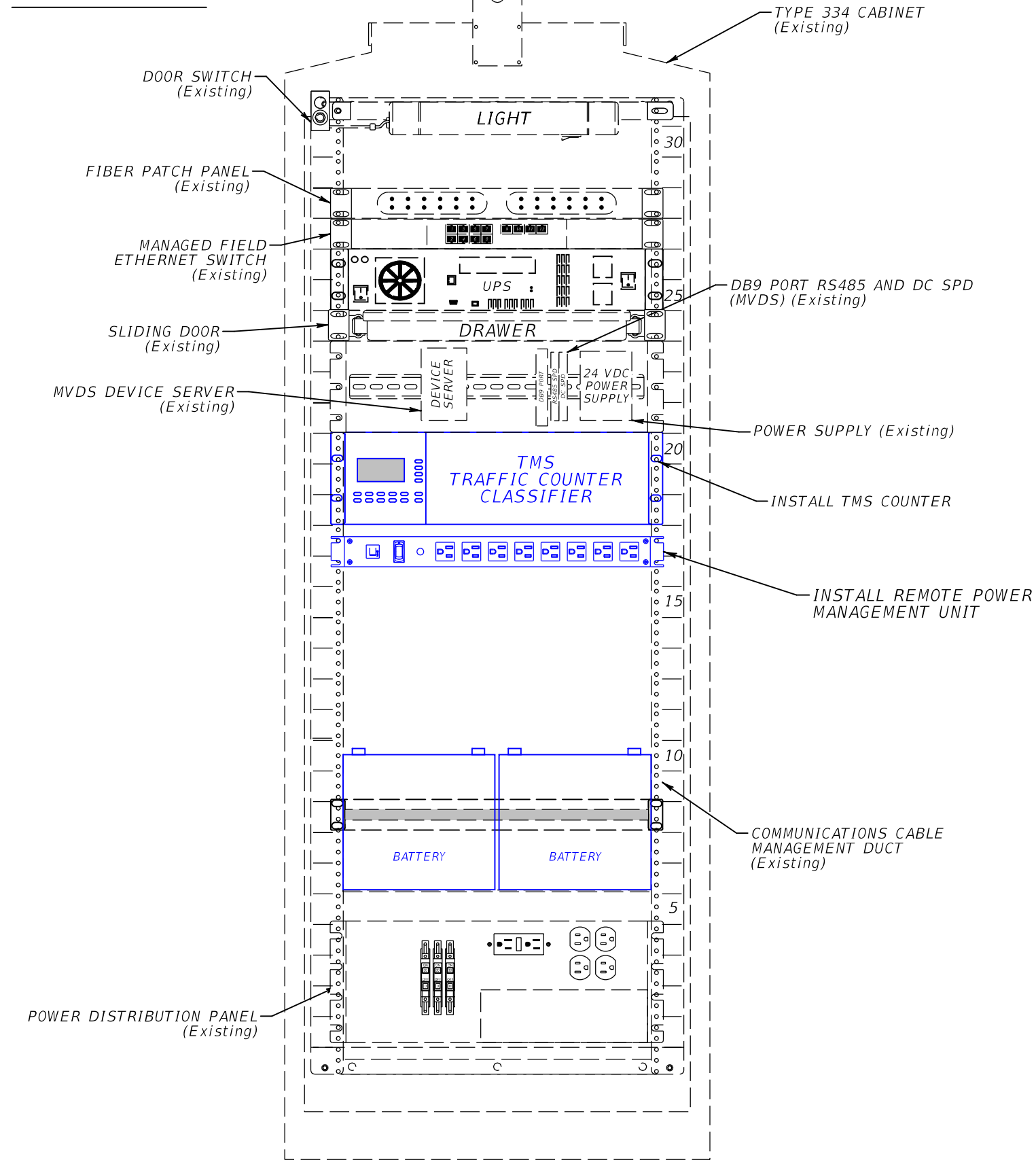
STATE OF FLORIDA DEPARTMENT OF TRANSPORTATION		
ROAD NO.	COUNTY	FINANCIAL PROJECT ID
SR 9	VOLUSIA	

WIRING DIAGRAM EXISTING CONDITIONS	SHEET NO.
---	--------------

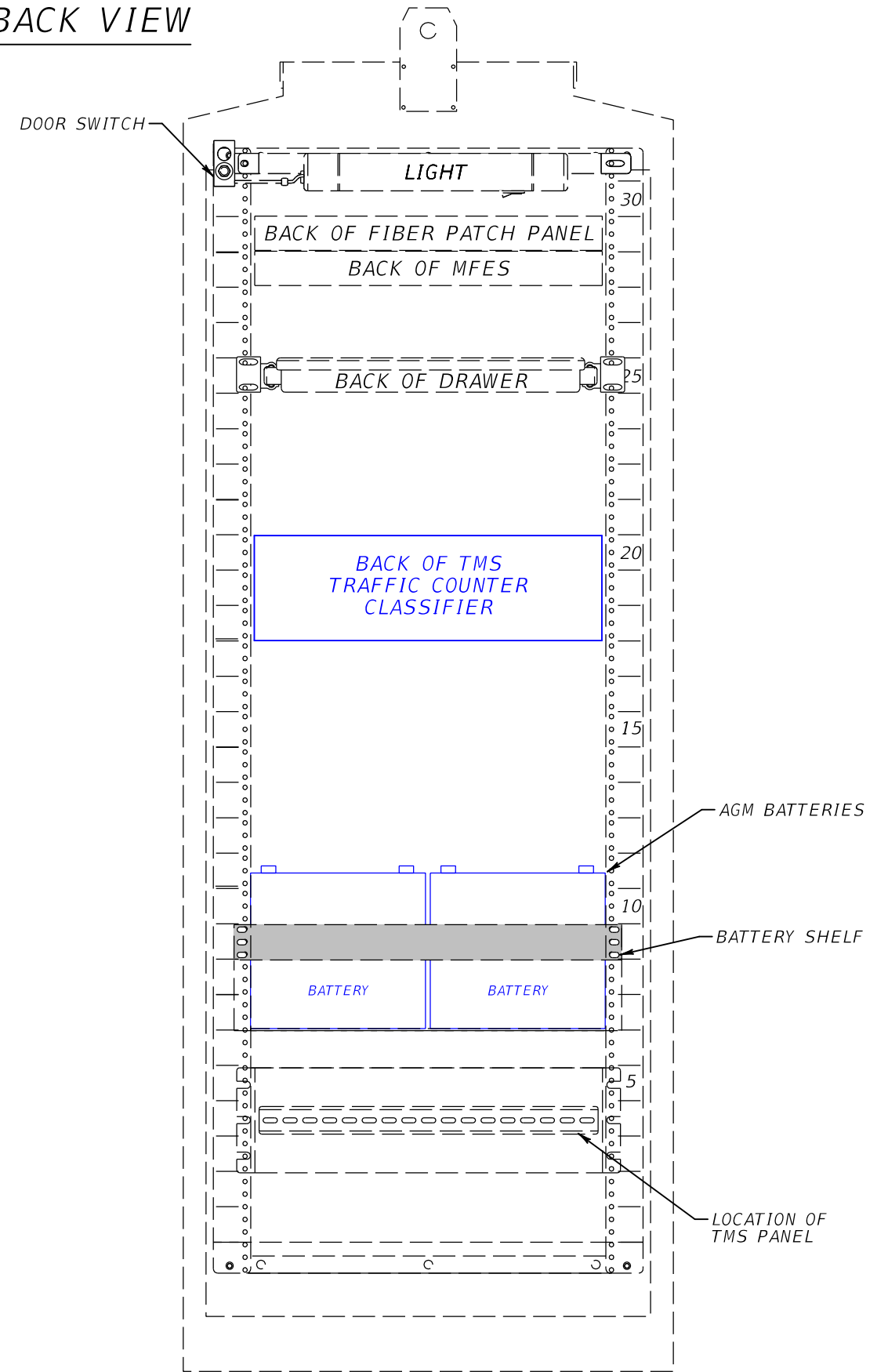


REVISIONS				STATE OF FLORIDA DEPARTMENT OF TRANSPORTATION			WIRING DIAGRAM PROPOSED CONDITIONS	SHEET NO.
DATE	DESCRIPTION	DATE	DESCRIPTION	ROAD NO.	COUNTY	FINANCIAL PROJECT ID		
				SR 9	VOLUSIA			

FRONT VIEW



BACK VIEW



REVISIONS				STATE OF FLORIDA DEPARTMENT OF TRANSPORTATION			SHEET NO.
DATE	DESCRIPTION	DATE	DESCRIPTION	ROAD NO.	COUNTY	FINANCIAL PROJECT ID	
				SR 9	VOLUSIA		

CABINET DETAIL